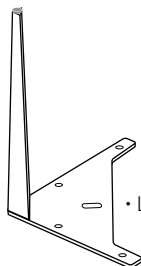


PHOENIX[®]

THE RETAIL BRAND

FURNITURE LEGS

FITTING INSTRUCTIONS



• Legs x 2

Contents:



• Screws x8



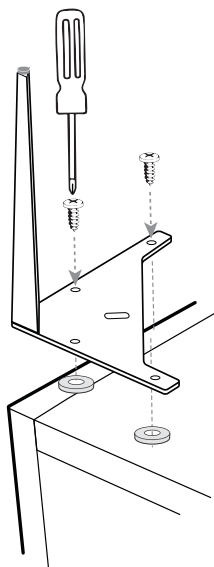
• Packing Washers x8

Notes:

- Pre-mount the unit at the correct height on the wall taking into account the length of the legs, prior to fitting the legs.
- The legs are not designed to take the full weight of the unit in a freestanding installation.
- Remove the unit from the wall, turn the unit upside down - ensure protection from damage on all edges.
- Fit the legs to the unit as outlined.

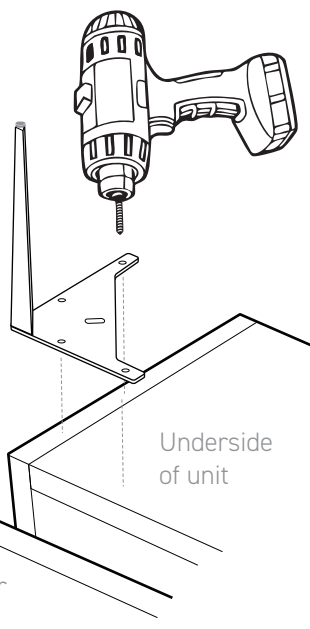
Modular Furniture: Align legs to outside of unit side panel.

Fitted Furniture: Align legs to outside of cladding panel.



1

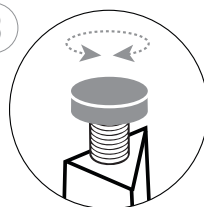
Mark and drill 4x pilot holes using a 2.5mm drill bit.



2

Use packing washers, where required, between the leg and unit to level. Screw legs to unit.

3



Adjust feet (x2) to suit.